

STUDIO AQUA

HOME BARISTA 2.0 Studio evolves into a brand-new version, Studio Aqua, now equipped with a hot water dispenser to expand the possibilities of the most demanding home baristas. Small size and new features for a first-class coffee corner.

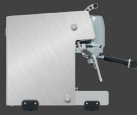
MORE RECIPES FOR YOUR HOME-CAFE' Thanks to its new hot water tap, Studio Aqua meets the needs of those home baristas who want to quickly range from espresso to diluted drinks, such as a caffè Americano, or prefer to alternate their preparations with tea and infusions.

MORE THAN MEETS THE EYE Studio Aqua is also equipped with a bigger boiler for improved temperature stability. It connects to the water supply system and is equipped with a double pressure gauge for greater control.

	DRIP TRAY DRAIN	PLUMBED DRAIN
dimensions (w x h x d)	321 x 434 x 400 mm	321 x 434 x 400 mm
weight	28 kg	28 kg
max power	2770 kW	2770 kW
connected load	220/240 V 50-60 Hz, 200 V 50/60 Hz, 100/120 V 50-60 Hz	220/240 V 50-60 Hz, 200 V 50/60 Hz, 100/120 V 50-60 Hz
boiler capacity	2,5 l	2,5 l
group head capacity	0,5 l	0,5 l

Version 115 also available

STUDIO AQUA



STAINLESS STEEL

1-MC-STUDIOAQ-1-NX-230



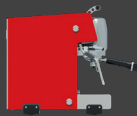
WHITE

1-MC-STUDIOAQ-1-W-230



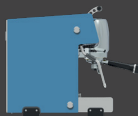
MOON GREY

1-MC-STUDIOAQ-1-MY-230



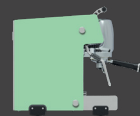
BLAZE RED

1-MC-STUDIOAQ-1-BR-230



ICE BLUE

1-MC-STUDIOAQ-1-IB-230



MINT GREEN

1-MC-STUDIOAQ-1-MG-230



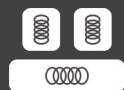
NAVY BLUE

1-MC-STUDIOAQ-1-NB-230



DARK

1-MC-STUDIOAQ-1-D-230



MULTIBOILER



WATER NETWORK
CONNECTION
(optional)



BARISTA KIT



CUSTOM
COLOURS



ENERGY
SAVING



58mm FILTER
(optional)



STUDIO

BE YOUR OWN HOME BARISTA Studio, Dalla Corte's professional home espresso machine, features an elegant design and high technology.

A SMALL MACHINE WITH GREAT POTENTIAL The simple display ensures that all parameters are constantly under control: set up the desired temperature and extraction time, with an intuitive and minimalistic design.

COMPACT AND ELEGANT Designed to fit even the smallest of places, Studio is the ideal choice for homes, offices, restaurants and small shops. It can be plumbed in or used by filling its water tank.

SHOW YOUR TRUE COLOURS Choose the colour that matches your style, Studio can be entirely customized in all RAL colours.

dimensions (w x h x d)	321 x 390,4 x 400 mm
weight	27,5 kg
max power	1975 kW
connected load	230/240 V 50-60 Hz
boiler capacity	1,5 l
group head capacity	0,5 l
water tank	4 l
water network connection	optional
barista lights	Included

Version 115 also available

STUDIO



STAINLESS STEEL

1-MC-STUDIO-1-NX-230



WHITE

1-MC-STUDIO-1-W-230



MOON GREY

1-MC-STUDIO-1-MY-230



BLAZE RED

1-MC-STUDIO-1-BR-230



ICE BLUE

1-MC-STUDIO-1-IB-230



MINT GREEN

1-MC-STUDIO-1-MG-230



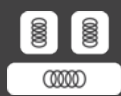
NAVY BLUE

1-MC-STUDIO-1-NB-230



DARK

1-MC-STUDIO-1-D-230



MULTIBOILER



WATER NETWORK
CONNECTION
(OPTIONAL)



WATER
TANK



BARISTA
KIT



CUSTOM
COLOURS



LEAD
FREE



ENERGY
SAVING



58mm FILTER
(OPTIONAL)